

Catálogo / catalogue

SAS 500 / 550 Ø 12 - 50 mm + 75 mm

SAS 555 / 700 Ø 57,5 mm + 63,5 mm

SAS 550 Ø 12 - 50 mm

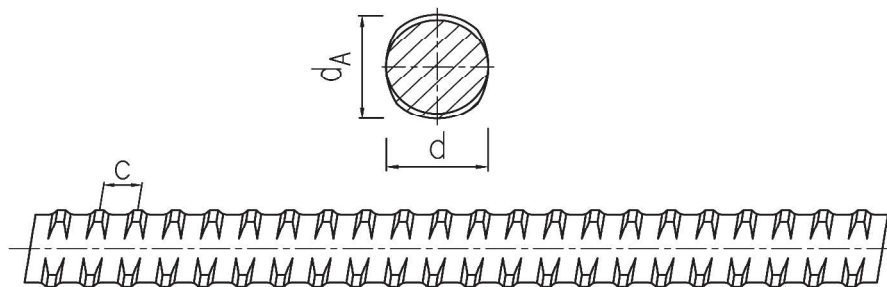
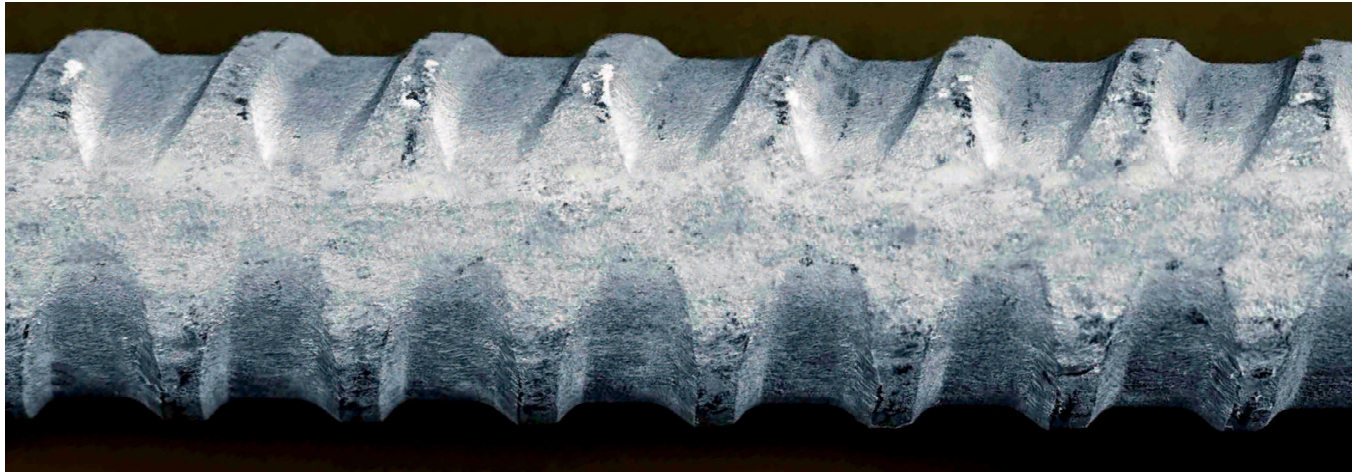


SAS SYSTEMS

SAS barras roscadas / SAS thread bars

SAS 500 / 550 Ø 15 - 50 mm + 75 mm

SAS 555 / 700 Ø 57,5 mm + 63,5 mm



SAS barra roscada
laminada en caliente, corrugada - de paso izquierdo

SAS thread bar
hot rolled, ribbed - left hand thread

d	[mm]	12	14	16	20	25	28	32	40	50	57,5	63,5	75
max d _A	[mm]	14	16	19	23	29	32	36	45	56	63	70	82
c	[mm]	7	7,5	8	10	12,5	14	16	20	26	20	21	24
f _{yk} (f _{0,2k}) / f _{tk} / A ₁₀ ¹⁾		500 N/mm ² / 550 N/mm ² / ≥ 6 %										555 N/mm ² 700 N/mm ² ≥ 5%	500 N/mm ² 550 N/mm ² ≥ 5%
F _{yk} (F _{0,2k})	[kN]	57	77	100	160	245	310	405	630	980	1441	1760	2209
F _{tk}	[kN]	62	85	110	175	270	340	440	690	1080	1818	2215	2430
A	[mm ²]	113	154	201	314	491	616	804	1260	1960	2597	3167	4418
G	[kg/m]	0,89	1,21	1,58	2,47	3,85	4,83	6,31	9,87	15,40	20,38	24,86	34,68

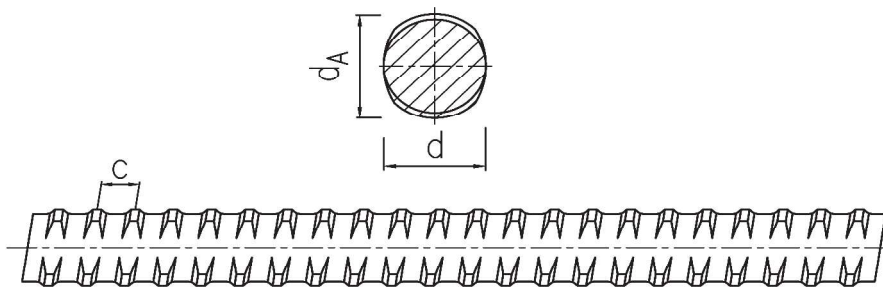
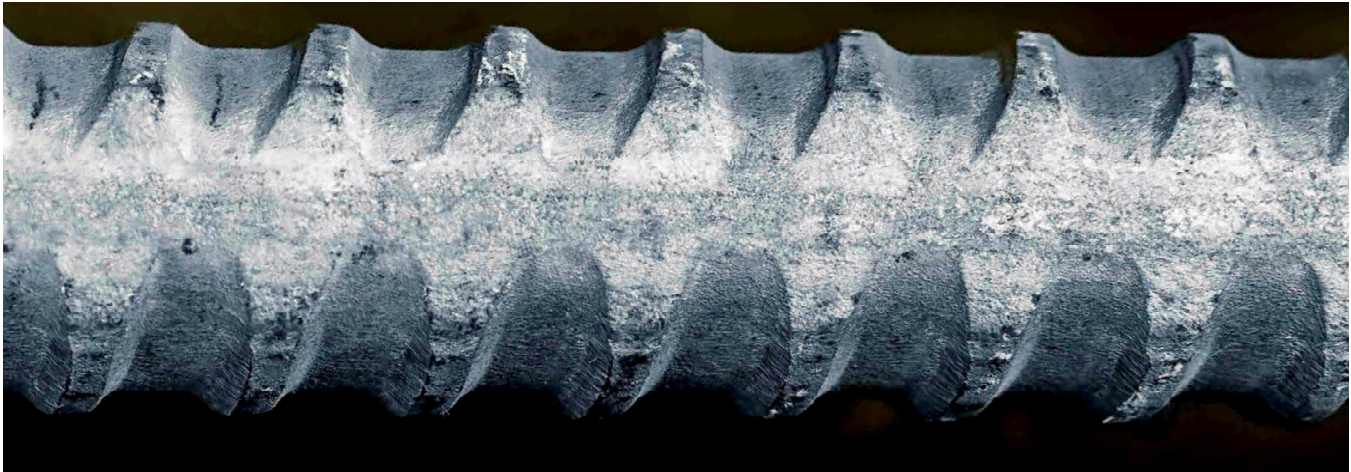
1) Deformación total porcentual en caso de carga máxima / percentage total elongation at maximum force.

Los pesos indicados son valores promedio. Los pesos reales pueden variar por tolerancias de fabricación.

Weight specifications of bar and accessories are average values. The actual values may deviate due to fabrication tolerances.

SAS barras roscadas / SAS thread bars

SAS 550 Ø 12 - 50 mm

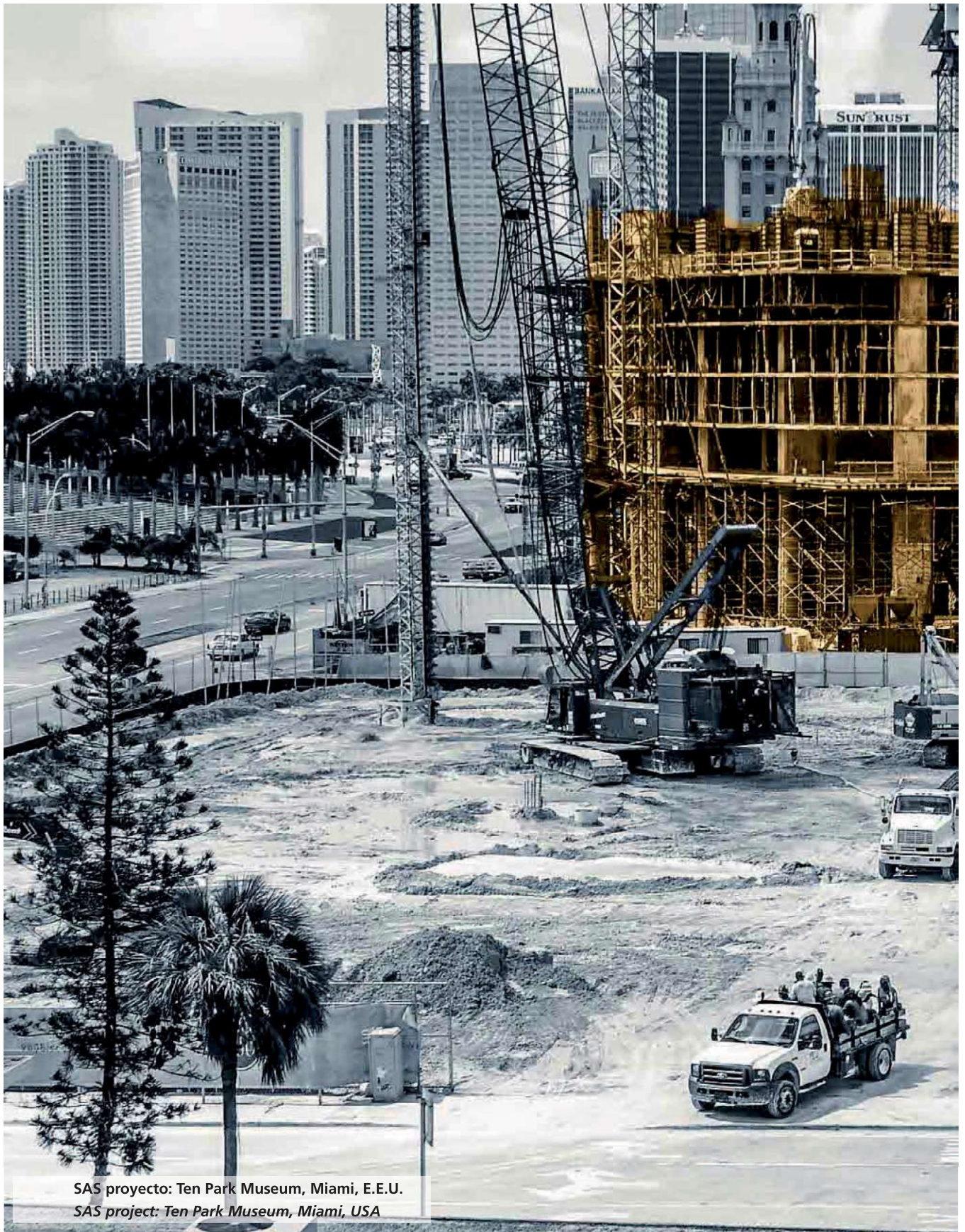


SAS barra roscada
laminada en caliente, corrugada - de paso izquierdo

SAS thread bar
hot rolled, ribbed - left hand thread

d	[mm]	12	14	16	20	25	26	28	30	32	36	40	50
max d _A	[mm]	14	16	19	23	29	30	32	34	36	41	45	56
c	[mm]	7	7,5	8	10	12,5	13	14	15	16	18	20	26
f _{yk} (f _{0,2k} / A ₁₀ ⁻¹)		550 N/mm ² ≥ 6 %											
F _{yk} (F _{0,2k})	[kN]	62	85	110	175	270	290	340	390	440	560	690	1080
F _{tk} = 1,08 x F _{yk}	[kN]	67	92	119	189	292	313	367	421	475	605	745	1166
A	[mm ²]	113	154	201	314	491	531	616	707	804	1020	1260	1960
G	[kg/m]	0,89	1,21	1,58	2,47	3,85	4,17	4,83	5,55	6,31	7,99	9,87	15,40

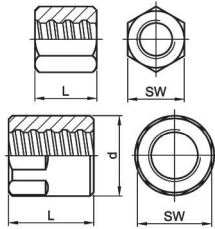
1) Deformación total porcentual en caso de carga máxima / percentage total elongation at maximum force



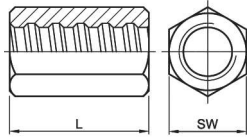
SAS proyecto: Ten Park Museum, Miami, E.E.U.

SAS project: Ten Park Museum, Miami, USA

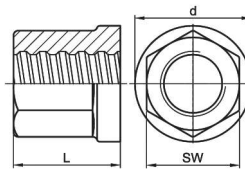
tuercas de anclaje recta
anchor nut flat



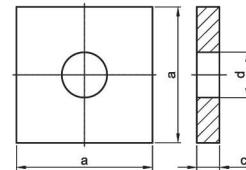
tuercas de anclaje larga
anchor nut long



tuercas de anclaje con collar
anchor nut with flange

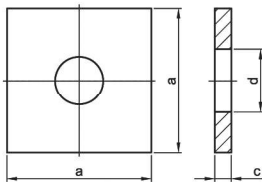


placa de anclaje recta
anchor plate flat

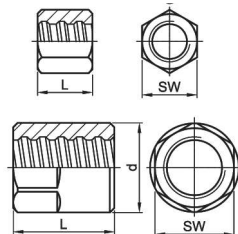


Ø [mm]	SW x L x d [mm]	[kg]	SW x L [mm]	[kg]	SW x L x d [mm]	[kg]	a x c x d [mm]	[kg]
	T 2002		T 2024		T 2163		T 2139	
12	22 x 25	0,05	22 x 35	0,08	-	-	50 x 8 x 16	0,14
14	27 x 35	0,12	27 x 45	0,17	-	-	50 x 8 x 18	0,14
16	32 x 40	0,20	32 x 50	0,25	-	-	50 x 8 x 20	0,15
20	36 x 45	0,26	32 x 65	0,26	-	-	70 x 10 x 25	0,33
25	41 x 50	0,34	41 x 75	0,51	-	-	70 x 10 x 30	0,35
26	46 x 50	0,45	41 x 80	0,48	-	-	70 x 10 x 33	0,47
28	46 x 55	0,48	41 x 85	0,44	-	-	100 x 12 x 33	0,86
30	50 x 60	0,65	46 x 90	0,77	-	-	120 x 20 x 36	1,87
32	55 x 60	0,78	50 x 90	0,86	-	-	120 x 20 x 40	2,06
36	60 x 65	1,00	55 x 95	1,17	-	-	150 x 30 x 44	4,50
40	65 x 70	1,19	60 x 100	1,27	65 x 70 x 85	1,42	150 x 30 x 47	4,95
50	80 x 90	2,17	80 x 120	2,92	80 x 85 x 100	2,48	190 x 45 x 58	11,82
57,5	90 x 100 x 102	3,69	-	-	90 x 100 x 110	3,50	220 x 50 x 67	17,69
63,5	100 x 115 x 108	4,72	-	-	100 x 115 x 125	5,05	245 x 50 x 70	22,37
75	100 x 100 x 108	2,99	-	-	100 x 120 x 115	4,15	275 x 65 x 86	35,62

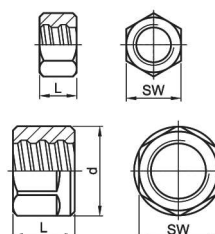
placa de anclaje recta pequeña
anchor plate flat small



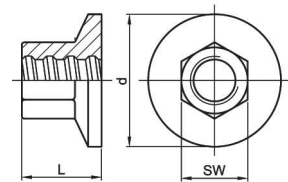
contratuercas largas
lock nut long



contratuercas cortas
lock nut short

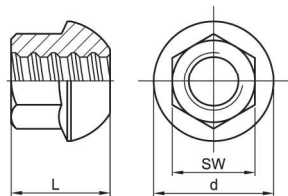


piezas de anclaje
anchor piece

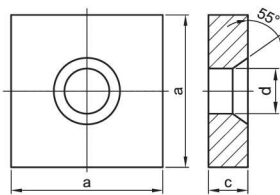


Ø [mm]	a x c x d [mm]	[kg]	SW x L x d [mm]	[kg]	SW x L x d [mm]	[kg]	SW x L x d [mm]	[kg]
	T 2008		T 2003		T 2040		T 2073	
12	-	-	19 x 20	0,03	19 x 13	0,03	-	-
14	-	-	27 x 25	0,08	27 x 15	0,06	-	-
16	-	-	32 x 30	0,15	32 x 20	0,10	30 x 33 x 50	0,19
20	-	-	32 x 40	0,16	32 x 20	0,08	36 x 40 x 65	0,36
25	-	-	41 x 40	0,25	41 x 20	0,14	41 x 45 x 70	0,50
26	-	-	41 x 45	0,26	41 x 25	0,15	41 x 50 x 90	0,70
28	-	-	41 x 45	0,26	41 x 25	0,15	46 x 50 x 90	0,77
30	-	-	50 x 50	0,52	50 x 30	0,28	50 x 55 x 95	1,00
32	-	-	50 x 50	0,47	50 x 30	0,28	50 x 60 x 100	1,34
36	-	-	55 x 55	0,61	55 x 30	0,37	60 x 65 x 110	1,70
40	120 x 17 x 45	1,69	60 x 65	0,83	60 x 35	0,45	65 x 70 x 120	1,89
50	150 x 20 x 58	3,12	80 x 80	1,94	80 x 50	1,21	80 x 85 x 150	3,38
57,5	-	-	90 x 80 x 102	2,87	90 x 60 x 102	2,08	90 x 100 x 175	5,55
63,5	-	-	90 x 115 x 102	3,55	90 x 75 x 102	2,18	100 x 115 x 250	11,50
75	-	-	100 x 80 x 108	2,37	100 x 80 x 108	2,12	120 x 120 x 220	11,24

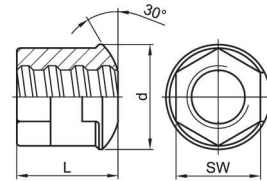
tuerca con asiento esférico 55°
domed nut 55°



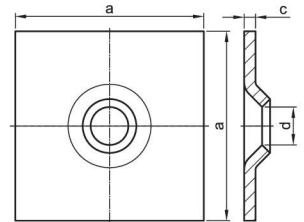
placa de anclaje cono 55°
anchor plate cone 55°



tuerca de asiento esférico 30°
dome nut 30°

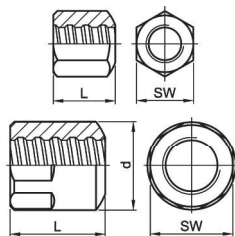


placa de anclaje abombada 30°/55°
30°/55° domed washer

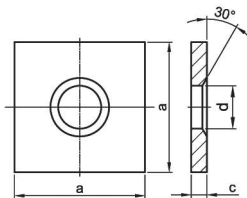


Ø [mm]	SW x L x d [mm]	[kg]	a x c x d [mm]	[kg]	SW x L x d [mm]	[kg]	a x c x d [mm]	[kg]
	T 2044		T 2011		T 2944		T 2132	
12	-	-	-	-	30 x 33 x 40	0,20	-	-
14	-	-	-	-	30 x 33 x 40	0,20	-	-
16	27 x 33 x 35	0,11	50 x 10 x 25	0,15	30 x 33 x 40	0,20	150 x 10 x 22	1,75
20	36 x 42 x 49	0,30	70 x 12 x 30	0,37	36 x 40 x 51	0,29	150 x 10 x 26	1,65
25	41 x 45 x 55	0,35	70 x 12 x 35	0,34	41 x 45 x 54	0,32	150 x 10 x 34	1,60
26	-	-	-	-	-	-	-	-
28	41 x 54 x 62	0,45	100 x 20 x 40	1,33	41 x 50 x 58	0,38	200 x 10 x 34	3,05
30	-	-	-	-	-	-	-	-
32	46 x 57 x 70	0,60	120 x 20 x 52	1,91	50 x 60 x 62	0,63	200 x 12 x 40	3,65
36	-	-	-	-	-	-	-	-
40	60 x 70 x 88	1,50	150 x 30 x 65	4,48	65 x 70 x 85	1,47	-	-
50	80 x 85 x 107	2,80	190 x 45 x 83	10,78	80 x 85 x 100	2,45	-	-
57,5	90 x 100 x 120	3,79	220 x 50 x 92	16,25	-	-	-	-
63,5	100 x 115 x 144	5,51	245 x 50 x 104	20,09	100 x 115 x 125	4,87	-	-
75	100 x 120 x 160	6,62	275 x 65 x 118	32,60	-	-	-	-

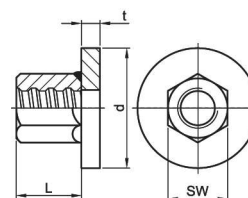
tuerca de anclaje abombada 30°
bull nose nut 30°



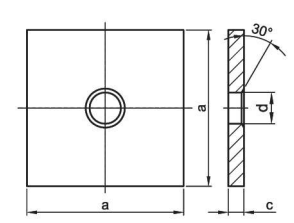
placa de anclaje cono 30°
anchor plate cone 30°



pieza de anclaje soldada
anchor piece welded

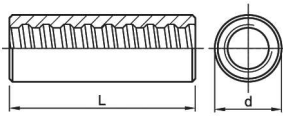


placa de anclaje 30° grande
anchor plate cone 30° big

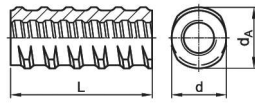


Ø [mm]	SW x L x d [mm]	[kg]	a x c x d [mm]	[kg]	SW x L x d x t [mm]	[kg]	a x c x d [mm]	[kg]
	T 2963		T 1928		T 2973		T 2928	
12	22 x 25	0,09	50 x 8 x 20	0,13	-	-	-	-
14	27 x 35	0,14	50 x 8 x 20	0,13	-	-	-	-
16	32 x 40	0,18	50 x 8 x 20	0,13	-	-	-	-
20	36 x 45	0,25	70 x 10 x 25	0,32	-	-	-	-
25	41 x 50	0,33	70 x 10 x 30	0,34	-	-	-	-
26	46 x 50	0,42	70 x 10 x 33	0,41	-	-	-	-
28	46 x 55	0,47	100 x 12 x 33	0,85	-	-	200 x 20 x 33	6,15
30	50 x 60	0,61	120 x 20 x 36	1,95	-	-	-	-
32	55 x 60	0,75	120 x 20 x 40	2,06	-	-	200 x 20 x 40	6,10
36	60 x 65	0,94	150 x 30 x 44	4,29	-	-	-	-
40	65 x 70	1,15	150 x 30 x 47	4,56	65 x 70 x 120 x 17	-	-	-
50	80 x 90	2,10	190 x 45 x 58	11,90	80 x 90 x 150 x 20	-	-	-
57,5	90 x 100 x 102	3,50	220 x 50 x 67	17,45	90 x 100 x 175 x 30	-	-	-
63,5	100 x 115 x 108	4,65	245 x 50 x 70	21,54	100 x 115 x 250 x 30	14,50	-	-
75	100 x 100 x 108	2,90	275 x 65 x 86	35,53	-	-	-	-

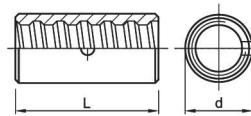
manguito estándar
coupler standard



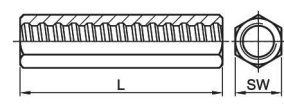
manguito de barra roscada
thread bar coupler



manguito de contacto
contact coupler

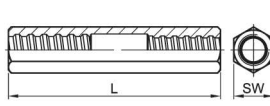


manguito hexagonal largo
hexagonal coupler long

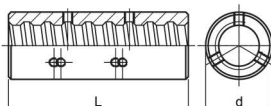


Ø [mm]	d x L	[kg]	d x dA x L [mm]	[kg]	d x L [mm]	[kg]	SW x L [mm]	[kg]
	T 3003		T 3087		T 3006		T 3010	
12	22 x 60	0,11	-	-	-	-	22 x 80	0,17
14	27 x 75	0,22	-	-	-	-	27 x 100	0,34
16	32 x 90	0,37	26,5 x 31 x 90	0,27	-	-	32 x 120	0,59
20	36 x 105	0,52	32 x 37 x 105	0,40	32 x 70	0,22	32 x 140	0,54
25	40 x 115	0,61	40 x 46 x 115	0,68	36 x 80	0,30	41 x 160	1,08
26	45 x 120	0,91	47 x 53 x 120	1,13	36 x 80	0,26	41 x 170	1,08
28	45 x 125	0,85	47 x 53 x 125	1,09	40 x 85	0,34	41 x 180	1,02
30	50 x 135	1,19	47 x 53 x 135	1,10	45 x 90	0,46	50 x 180	1,71
32	52 x 140	1,32	57 x 64 x 140	1,92	45 x 90	0,46	50 x 180	1,71
36	60 x 150	1,92	57 x 64 x 150	1,78	50 x 120	0,73	60 x 180	2,75
40	65 x 160	2,34	65 x 72 x 160	2,52	54 x 120	0,82	65 x 210	3,58
50	80 x 200	4,49	-	-	63 x 160	1,09	80 x 240	6,12
57,5	102 x 230	9,51	-	-	80 x 170	2,92	-	-
63,5	102 x 260	9,41	-	-	90 x 200	4,16	-	-
75	108 x 240	8,01	-	-	102 x 210	5,33	-	-

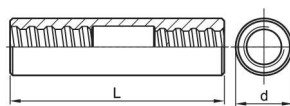
manguito reductor largo
reducing coupler long



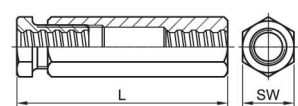
manguito con seguro antigiro
coupler with set screws



manguito reductor redondo
reducing coupler



bloque de apriet
tensioning lock



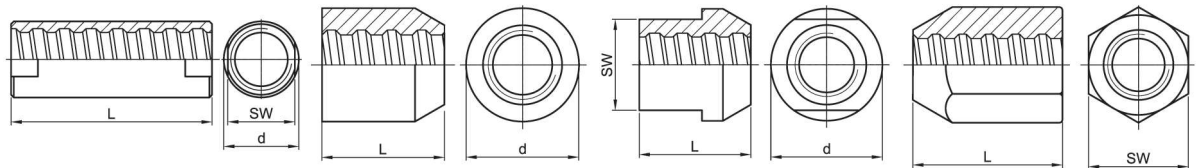
Ø [mm]	Ø x SW x L [mm]	[kg]	d x L [mm]	[kg]	Ø x d x L [mm]	[kg]	SW x ~L [mm]	[kg]
	T 3012		T 3020		T 3102		T 3105	
12	-	-	-	-	-	-	32 x 130	0,62
14	-	-	-	-	-	-	32 x 140	0,69
16	16/14 x 32 x 120	0,62	-	-	16/14 x 32 x 120	0,55	36 x 150	0,92
20	20/16 x 32 x 140	0,65	-	-	20/16 x 36 x 130	0,67	41 x 175	1,12
25	25/20 x 41 x 175	1,33	-	-	25/20 x 40 x 150	1,00	46 x 190	1,42
26	26/20 x 41 x 175	1,31	-	-	26/20 x 40 x 155	1,10	50 x 205	1,83
28	28/25 x 41 x 220	1,80	-	-	28/25 x 45 x 170	1,24	50 x 205	1,78
30	30/26 x 50 x 225	2,35	-	-	30/25 x 50 x 180	1,71	60 x 225	2,92
32	32/28 x 50 x 230	2,41	52 x 140	1,35	32/28 x 52 x 180	1,80	60 x 225	2,87
36	36/32 x 60 x 245	3,10	60 x 150	2,00	36/32 x 60 x 235	2,91	70 x 250	5,20
40	40/32 x 65 x 260	5,00	65 x 160	2,35	40/32 x 65 x 240	3,90	80 x 270	6,60
50	50/40 x 80 x 290	7,48	80 x 200	4,50	50/40 x 80 x 240	6,00	100 x 310	15,66
57,5	-	-	102 x 230	9,45	57,5/50 x 90 x 280	7,99	100 x 325	17,72
63,5	-	-	102 x 260	9,50	63,5/57,5 x 102 x 310	11,56	100 x 390	22,21
75	-	-	108 x 240	8,02	75/63,5 x 108 x 310	11,37	100 x 330	16,09

manguito bonificado
coupler tempered

manguito de soldadura
welding bolt

manguito de soldadura con
superficie de apoyo
welding bolt with wrench flat

manguito de soldadura
hexagonal
welding bolt hexagonal

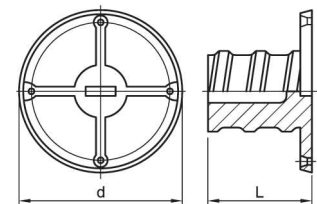
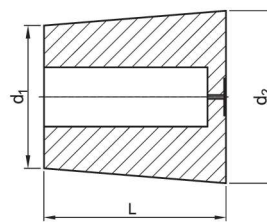
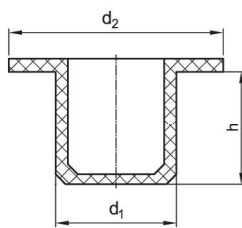


Ø [mm]	SW x d x L [mm]	[kg]	d x L [mm]	[kg]	SW x L x d [mm]	[kg]	SW x L [mm]	[kg]
	T 3927		T 3022		T 3024		T 3026	
12	-	-	30 x 30	0,18	-	-	32 x 40	0,21
14	-	-	36 x 40	0,23	-	-	36 x 50	0,34
16	-	-	40 x 45	0,33	-	-	41 x 55	0,48
20	-	-	45 x 50	0,42	-	-	46 x 65	0,70
25	-	-	50 x 55	0,72	-	-	50 x 75	0,89
26	-	-	50 x 55	0,72	-	-	50 x 70	0,98
28	-	-	55 x 60	0,94	-	-	55 x 85	1,15
30	-	-	60 x 65	1,10	-	-	60 x 90	1,31
32	-	-	60 x 65	1,10	-	-	60 x 90	1,31
36	-	-	70 x 70	1,45	-	-	70 x 95	1,70
40	50 x 56 x 150	1,65	80 x 80	2,59	65 x 80 x 80	1,96	80 x 100	2,60
50	60 x 70 x 180	2,14	90 x 90	2,65	80 x 100 x 90	2,64	90 x 120	4,04
57,5	-	-	102 x 100	3,65	-	-	90 x 120	4,04
63,5	80 x 95 x 230	6,13	114 x 120	6,75	-	-	100 x 120	5,60
75	-	-	-	-	-	-	-	-

tapón de cierre
inner cap

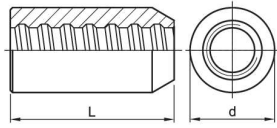
cono de recesión
recess cone

placa de clavos
nail plate

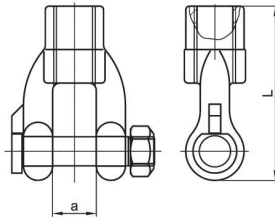


Ø [mm]	d ₁ x d ₂ x h [mm]	[kg]	d ₁ x d ₂ x L [mm]	[kg]	d x L [mm]	[kg]
	T 5025		T 5050		T 5979	
12	12 x 19 x 7	0,001	36 x 42 x 40	0,023	36 x 20	0,005
14	14 x 19 x 7	0,001	41 x 49 x 49	0,035	42 x 20	0,007
16	16 x 25 x 9	0,001	48 x 85 x 64	0,042	48 x 25	0,010
20	20 x 25 x 9	0,001	50 x 62 x 74	0,078	48 x 30	0,012
25	25 x 30 x 9	0,001	63 x 76 x 78	0,108	58 x 30	0,019
26	26 x 31 x 9	0,002	-	-	58 x 35	0,019
28	28 x 35 x 9	0,002	74 x 89 x 89	0,132	58 x 40	0,023
30	30 x 35 x 9	0,002	-	-	68 x 45	0,034
32	32 x 37 x 9	0,003	77 x 93 x 98	0,181	68 x 45	0,034
36	36 x 42 x 9	0,003	-	-	-	-
40	40 x 48 x 10	0,004	-	-	-	-
50	50 x 58 x 10	0,005	-	-	-	-
57,5	-	-	-	-	-	-
63,5	64 x 74 x 10	0,006	-	-	-	-
75	-	-	-	-	-	-

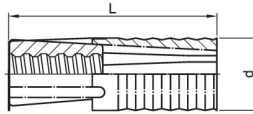
manguito biselado
coupler chamfered



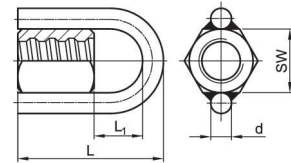
piezo de tenedor
fork piece



ancla de expansión
expansion shell

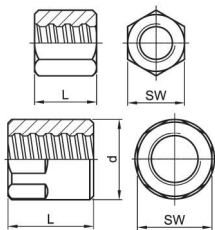


tuerca anular
ring nut

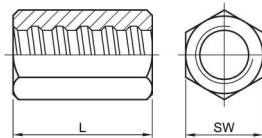


Ø [mm]	d x L [mm]	[kg]	a x d x L [mm]	[kg]	d x L [mm]	[kg]	SW x L x L1 x d [mm]	[kg]
	T 3901		T 2926		T 2136		T 2927	
12	-	-	-	-	-	-	-	-
14	-	-	-	-	-	-	-	-
16	-	-	-	-	32 x 92	0,22	32 x 110 x 54 x 16	0,57
20	36 x 105	0,42	30 x 20 x 120	1,17	39 x 110	0,45	36 x 120 x 59 x 16	0,67
25	40 x 115	0,50	30 x 20 x 120	1,10	49 x 120	0,63	41 x 130 x 64 x 16	0,77
26	-	-	-	-	-	-	-	-
28	45 x 125	0,74	-	-	49 x 120	0,57	46 x 145 x 74 x 16	0,97
30	-	-	-	-	-	-	-	-
32	52 x 140	1,22	-	-	59 x 150	1,02	55 x 165 x 89 x 16	1,34
36	-	-	-	-	-	-	-	-
40	-	-	-	-	-	-	65 x 194 x 103 x 20	2,10
50	-	-	-	-	-	-	79 x 234 x 122 x 20	3,29
57,5	-	-	-	-	-	-	90 x 256 x 136 x 20	5,06
63,5	-	-	-	-	-	-	100 x 280 x 144 x 20	6,07
75	-	-	-	-	-	-	-	-

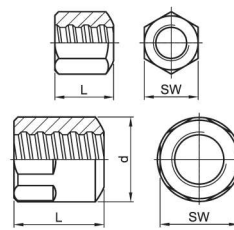
tuerca de anclaje EP recta
anchor nut EP flat



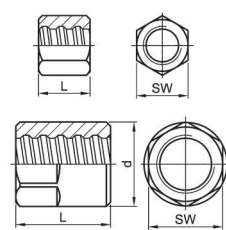
tuerca de anclaje EP larga
anchor nut EP long



tuerca de anclaje abombada EP 30°
bull nose nut EP 30°

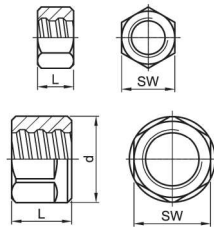


contratuerca EP larga
lock nut EP long

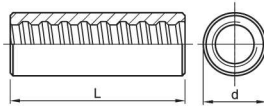


Ø [mm]	SW x L x d [mm]	[kg]	SW x L [mm]	[kg]	SW x L x d [mm]	[kg]	SW x L x d [mm]	[kg]
	T 2002 EP		T 2024 EP		T 2963 EP		T 2003 EP	
12	22 x 30	0,07	22 x 35	0,08	-	-	19 x 25	0,05
14	27 x 40	0,14	27 x 45	0,17	-	-	27 x 30	0,12
16	32 x 50	0,25	32 x 50	0,25	32 x 50	0,21	32 x 35	0,17
20	36 x 55	0,31	32 x 65	0,26	36 x 55	0,28	32 x 45	0,18
25	41 x 60	0,40	41 x 75	0,44	41 x 60	0,40	41 x 50	0,31
26	46 x 60	0,60	41 x 80	0,48	-	-	41 x 55	0,38
28	46 x 65	0,55	41 x 85	0,51	46 x 65	0,46	41 x 55	0,31
30	50 x 75	0,84	46 x 90	0,77	-	-	50 x 60	0,67
32	55 x 75	0,97	50 x 90	0,86	55 x 75	0,93	50 x 60	0,57
36	60 x 80	1,28	55 x 95	1,17	-	-	55 x 65	0,77
40	65 x 85	1,43	60 x 100	1,27	65 x 85	1,40	60 x 75	0,96
50	80 x 105	2,45	80 x 120	2,92	80 x 105	2,41	80 x 95	2,50
57,5	90 x 115 x 102	4,30	-	-	90 x 115 x 102	4,11	90 x 100 x 102	3,68
63,5	100 x 130 x 108	6,65	-	-	100 x 130 x 108	6,59	90 x 130 x 102	4,56
75	100 x 115 x 108	3,48	-	-	100 x 115 x 108	3,38	100 x 95 x 108	2,86

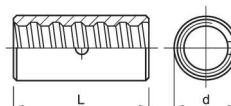
contratuera EP corta
lock nut EP short



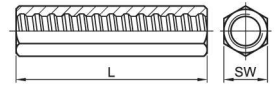
manguito EP estándar
coupler EP standard



manguito de contacto EP
contact coupler EP



manguito hexagonal EP largo



Ø [mm]	SW x L [mm]	[kg]	d x L [mm]	[kg]	d x L [mm]	[kg]	SW x L [mm]	[kg]
12	19 x 20	0,03	22 x 75	0,15	-	-	22 x 80	0,16
14	27 x 25	0,09	27 x 90	0,27	-	-	27 x 100	0,33
16	32 x 30	0,15	32 x 105	0,46	-	-	32 x 120	0,54
20	32 x 40	0,17	36 x 120	0,59	32 x 70	0,22	32 x 140	0,59
25	41 x 40	0,28	40 x 135	0,71	36 x 80	0,30	41 x 160	1,07
26	41 x 45	0,31	45 x 140	1,13	36 x 80	0,27	41 x 170	1,01
28	41 x 45	0,41	45 x 145	0,97	40 x 85	0,34	41 x 180	1,10
30	50 x 50	0,54	50 x 155	1,50	45 x 90	0,50	50 x 180	1,75
32	50 x 50	0,50	52 x 160	1,49	45 x 90	0,45	50 x 180	1,71
36	55 x 55	0,64	60 x 170	2,30	50 x 120	0,72	60 x 190	2,75
40	60 x 65	0,85	65 x 190	3,07	54 x 120	0,82	65 x 210	2,71
50	80 x 80	2,10	80 x 235	5,50	65 x 160	1,11	80 x 240	5,88
57,5	90 x 75 x 102	2,69	102 x 260	10,73	80 x 170	2,90	-	-
63,5	90 x 115 x 102	3,75	102 x 300	10,74	90 x 200	4,14	-	-
75	100 x 80 x 108	2,36	108x x260	8,67	102 x 210	5,30	-	-

Homologaciones / approvals



Las homologaciones actuales y los certificados se puede descargar de nuestra página web www.annahuette.com

Current approvals and certificates can be downloaded from our homepage www.annahuette.com

Además, las empresas asociadas de SAH disponen de homologaciones y certificados adicionales en varios países para diferentes aplicaciones.

Furthermore, the partner-companies of SAH own further approvals and certificates in several countries for different applications as well.